

Guide MagMotor adaptor mounting
Date: 2017-06-28
Author: Kevin

Mounting of ID39-B adapter for MagMotor CerCell pn 2253

Convert MagMotor C21-K175 servo motor (possible including gear box) with magnet coupling adapted to ID39-B style adapter for drive of CerCell equipment. MagMotor is by New Brunswick Scientific / Eppendorf PCS.



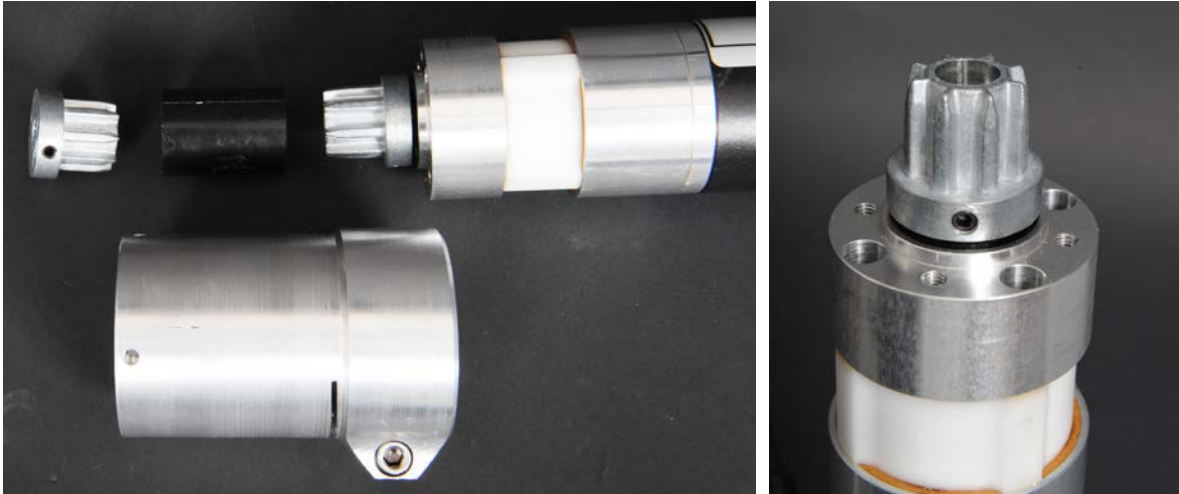
As original equipped with magnetic coupling and some motors further with a gearbox.



All easy to disassemble with ordinary tools.

The CerCell kit PN # 2253 consist of:

1. ID39 aluminium adapter incl M8 bolt
2. PowerGrip ZN21 sprocket
3. SP21 polyurethane black polyurethane rubber coupling



CerCell seek to use bolts with internal hexagonal sockets. The one M8 bolt should be tighten 2-3 Nm or 2-3 lbf/feet torque.

We suggest mounting the metal sprocket on the shaft before the large aluminium adapter!

Distance in between the rear flange of the metal sprocket and the motor flange / gearbox needs to around 2-3 mm or app 1/8". The metal sprocket to fasten with the black steel Allan bolt M5. Which need an Allen key 2,5 mm. Tighten well like 2-3 Nm or 2-3 lbf/feet.



Easy mounting on CerCell MST as well as CellVessel or BactoVessel HPD drive.

We refer to these links

<http://cercell.com/support/drive-system-details/servo-motors/>

<http://cercell.com/support/drive-system-details/conversion-kits-for-servo-motors/>

<http://cercell.com/support/drive-system-details/couplings-in-adapters/>

END